

GOODWE

Galaxy Series

BMT-G5/120A | 565W | 570W | 575W

30 30-year power guarantee

12 12-year product warranty



Lightweight

- 6.8 kg/m² weight
- Up to 50% lighter than conventional module
- Roof load \leq 11 kg/m² compatible



Various & Quick Installation

- Rail & railless installation options
- Clamp-fixed, compatible with standard PV modules
- 20-30% faster installation, lower costs



High Reliability

- Wind¹ and hail² impact resistance
- Flat bottom end frame for self-cleaning
- Aluminum frame & heat-strengthened glass: high impact resistance

¹Third-party lab test from CTC

²Third-party TUV lab: report number CN2226P8 001

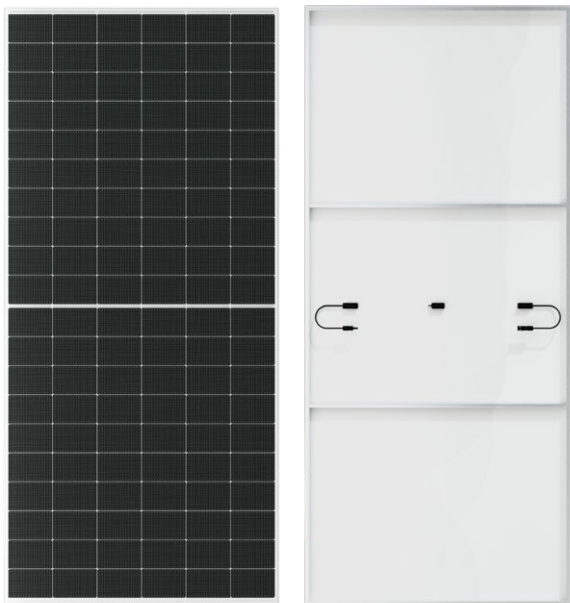


High Power Generation

- High-efficiency TOPCon cells
- 2% less generation loss³ with ventilation design
- Up to 232W/ m² of power generation

³Based on internal lab test





Structural Data

BMT-G5/120A

Size	2173±2*1132±2*29±1mm		
Weight	16.8±1kg		
Unit Weight	6.8±0.4kg/m ²		
Front Surface	1.6mm Heat-strengthened Glass		
Cell Type	N-Type TOPCon Half Cells (120pcs)		
Frame	Aluminum Alloy		
Backsheet	White FPF		
Cable (length, section)	350 mm, 4 mm ²		

Electrical Data (STC)

Max Power (Pmax)	565W	570W	575W
Efficiency (%)	22.97%	23.17%	23.38%
Power/ m ² (W/m ²)	230W/m ²	232W/m ²	234W/m ²
Voltage at Max Power (Vmpp)	37.92V	38.13V	38.34V
Voltage at Open Circuit (Voc)	44.34V	44.55V	44.76V
Current at Max Power (Impp)	14.90A	14.95V	15.00A
Current at Short Circuit (Isc)	15.57A	15.62V	15.67A

Load Capacity

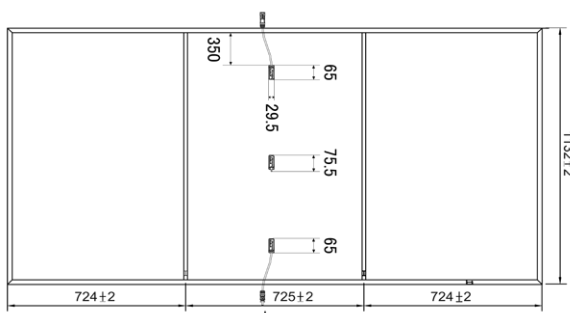
Maximum static load on the front	2400Pa
Maximum static load on rear side	2400Pa

Working Parameters

Maximum System Voltage	1500V
Maximum Fuse Rating Operation	25A
Temperature Range	-40° C ~ +70° C
Hail Test	Hail Diameter: 25 mm Specified Speed: 23 m/s
The Rated Operating Temperature	45±2°C
Fire-resistant Class	C
Ingress Protection Rating	IP67
Protection Class	II

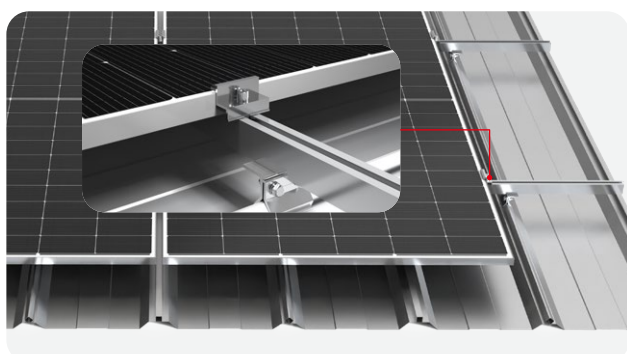
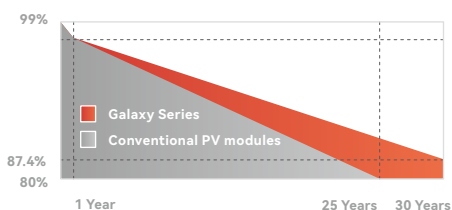
Temperature Parameters

Isc TP	+0.03%/°C
Voc TP	-0.27%/°C
PMPP TP	-0.30%/°C

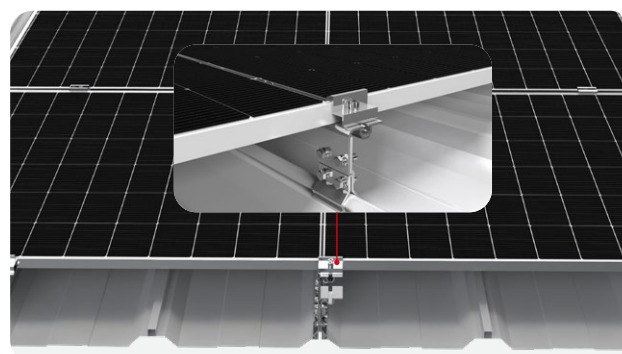


✓ 1% degradation in the first year

✓ 0.4% decay per year



Clamps Rail Installation



Clamps Railless Installation

*Optional connector for roofsheet leveling available